

# NOW

## ENBLOC AIR CONDENSED CHILLERS FOR EXTERNAL INSTALLATION



# Jolly RS/m

**HFC 407 C**  
ecological refrigerant



### PROFILE

The ENBLOC Jolly RS/m air condensing CHILLERS, have been designed to produce process cooled water for the cooling of industrial plants on closed or open circuit. They are completely independent units consisting of a hydraulic circuit complete with electric pump. The special construction guarantees high efficiency thanks to a very low power consumption even in extreme conditions of use (tropical climates with ambient temperature up to +45°C). In particular the oversizing of the heat exchangers enables the compressor to work under excellent conditions raising the cooling capacity. The chiller is controlled by a NOVA FRIGO microprocessor governing both the evaporating and the condensing pressures and to survey precise measures of the system parameters. It is possible to control the units by a "MULTICHILLER" board which, after checking the thermal load, adjusts the introduction of each compressor. The results are: stability and precision of the process temperature, balanced operation of compressors and, as a consequence, a higher energy saving, thus avoiding useless current startings.



### TECHNICAL FEATURES

**Steel main frame** of pre-galvanized, aluminium steel treated and painted with epoxy powder.

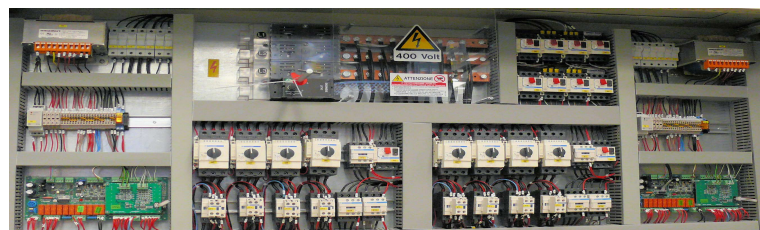
**Gas condenser** with an extensive exchange surface, with copper piping and aluminium fins (6 ranks).

**Gas evaporator** it's a plate heat exchanger, with AISI 316 stainless steel, copper braze welded plates. It is placed inside a shell of thermo-insulating material to avoid the condensing and the heat exchange towards outside.

### CONTROLLED BY MICROPROCESSOR

Jolly RS/m series units are equipped with an innovative multi-function microprocessor control specially designed by NOVA FRIGO to optimize the systems operation and control for cooling.

Each unit or system can be equipped with remote control panel that allows the complete management of unit linked.

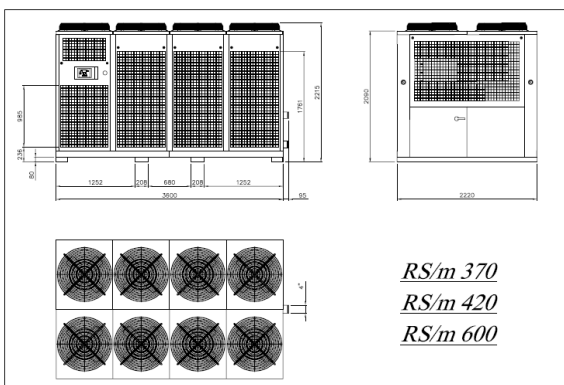
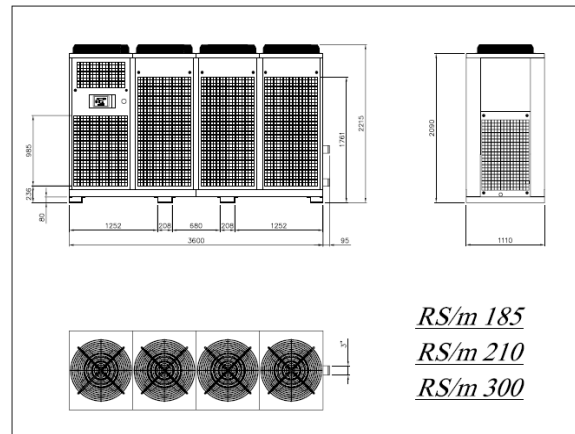
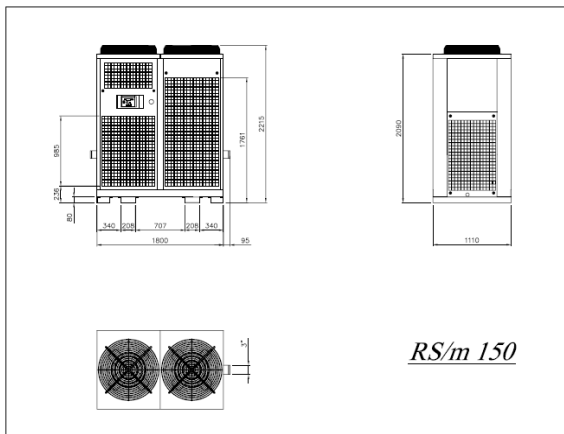


## ENBLOC AIR CONDENSED CHILLERS FOR EXTERNAL INSTALLATION

### TECHNICAL DATA

Mod. (1)	Cooling (2)		Heating		Compressor		E.E.R.	Gas	Pumps				Fans			Tank	Pipe connection	Sound level (3)	Dimensions			Net weight
	kW	kcal/h	kW	kcal/h	n°	kW tot.			kW/kW	n°	kW tot.	m³/h	bar	n°	kW tot.				m³/h	l	Ø	
RS/m 150	160,0	137.600	177,0	152.220	2	27,0	5,8	R407c	1	3,0	25,8	2,7	2	5,5	38.000	193	3"	62	2.890	1.110	2.230	1.350
RS/m 200	201,8	173.600	218,0	187.480	2	37,0	5,8	R407c	1	4,0	31,8	2,7	4	6,3	55.000	260	3"	63	3.790	1.110	2.230	2.050
RS/m 250	225,9	194.300	253,0	217.580	4	41,0	5,5	R407c	1	5,5	36,5	2,7	4	7,6	60.000	260	3"	63	3.790	1.110	2.230	2.150
RS/m 330	339,0	291.600	354,0	304.440	4	59,4	5,7	R407c	1	6,0	51,6	2,7	4	11,2	75.000	260	4"	64	3.790	1.110	2.230	2.450
RS/m 400	418,6	360.00	437,0	375.820	4	74,0	5,7	R407c	2	8,0	63,6	2,7	8	12,6	110.000	260	4"	65	3.790	2.220	2.230	4.050
RS/m 500	483,2	415.540	500,0	430.000	8	85,8	5,6	R407c	2	11,0	72,9	2,7	8	15,2	120.000	260	4"	65	3.790	2.220	2.230	4.250
RS/m 650	643,2	553.100	708,0	608.880	8	113,2	5,7	R407c	2	11,0	103,2	2,7	8	22,4	144.000	260	4"	66	3.790	2.220	2.230	4.850

- (1) - Standard electric alimentation 400V-3Ph-50Hz - Special on request  
 (2) - Water out temperature 15°C - Ambient temperature 25°C  
 (3) - Sound pressure level at 10 metres



**NOVA FRIGO Engineering S.r.l.**  
 Via Montebello, 5/D  
 25017 - LONATO (BS) - ITALIA  
 Tel: (+39) 030 99 13 250  
 Fax: (+39) 030 99 19 043  
 e-mail: info@novafrigo.it  
[www.novafrigo.it](http://www.novafrigo.it)